

MISSOULA BUTTERFLY HOUSE AND INSECTARIUM NEWS



THE BUZZ

Soaring to New Heights?

By Glenn Marangelo, Founding Board Member

Spring 2018

INSIDE...

- Insect Insight
- What's New
- Summer Camps

OUR MISSION

The Missoula Butterfly House and Insectarium inspires an appreciation and understanding of insects and their relatives through educational programs and innovative science exhibits featuring live invertebrates.



I'm sure you've heard similar phrases used before. "The air was heavy with excitement." While we've had a lot of excitement since opening the Missoula Insectarium almost three years ago, I've never fully understood how "heavy" that excitement can be ...until now.

Over the past year, the reach and impact of our unique facility and education programs have continued to grow. We've added (and are ready to add) new exhibits. The number of school field trips has increased. Our popular Bugs & Brews lecture series has been selling out before we even open the doors. And overall, the number of visitors being introduced to our host of Bug Ambassadors continues to grow. But that's just the beginning.

IMAGINE...

A 2,000 square foot tropical butterfly house, filled with incredibly beautiful butterflies. Roughly twice our current space for our exhibits and classroom. A 100+ capacity room for presentations and lectures. And grounds that include wildflower / pollinator demonstration gardens, greenhouses, an outdoor classroom, and more.

If you've been a partner in our mission for a while, you'll recognize this as the long-term vision we've

had since starting this organization. And I'm thrilled to inform you that the path to achieving this vision might just be ready to unfold.

Over the past five months, our search for a new location has uncovered a number of possibilities, including an opportunity that gained traction in early December that includes our long-term vision for a tropical butterfly house. Working with our partners, we've already had a number of meetings with architects to review different designs and possibilities. To say that things have been moving incredibly fast is an understatement. The air is indeed heavy with excitement (mixed with a little anxiety too).

We have a tremendous amount of work to do. Many questions need to be answered and until we have a memorandum of understanding in place we're keeping the details of this opportunity under wraps ...otherwise, I'd need to send Polly (our Goliath Birdeater Tarantula) out to assure your silence. But rest assured, this is the opportunity we've been working toward for years. And as soon as things solidify, I'll be sure to share more of the details.

But for now, close your eyes and imagine it with me. Dreams do come true. 🦋

VISIT US!

218 E. Front St, Missoula
406-317-1211

Admission:

\$4 for guests ages 4 and up
FREE for members

Open:

Wednesday-Friday 11am-5pm
Saturday 10am-5pm

HOURS ARE SUBJECT
TO CHANGE. PLEASE CALL
BEFORE YOU VISIT.

INSECT INSIGHT The Pedes



So you're digging in the garden and see something crawling in the freshly turned soil. With its many legs, it's clearly not a worm. But what is it? A millipede or a centipede?

They both have long, segmented bodies; lots of legs; and can be found living in similar conditions. But despite the similarities upon first appearance, they could not be more different in terms of diet and behavior.

Millipedes are the leggie of these two classes of arthropods, having 4 legs per body segment to the centipedes' mere two legs per body segment. Millipedes' legs are positioned under their bodies, while centipedes' legs go out to the sides. And millipedes tend to be round or more tubular in shape, while centipedes are generally flatter.

But when it comes to getting a meal, that's where the differences really come into play. Millipedes are slow moving animals. When your diet consists of decaying organic matter, there's no need for speed. Centipedes are carnivorous predators that are racecars in comparison. Coupled with a venomous bite, delivered by fangs that evolved from what used to be a first pair of legs, they are extremely capable predators and can tackle prey ranging from insects, spiders, reptiles, small mammals (mice) and birds.

If disturbed by your garden work, millipedes will often curl into a coil -- using their hard exoskeleton to protect their softer underside and legs. If further provoked, some millipedes can discharge a smelly and distasteful liquid that can also stain or irritate your skin. Centipedes will use their speed to flee the scene, but also have the ability to deliver a painful bite. Luckily, our centipedes in Montana are too small to inflict a bite to humans.

So the next time you're digging in the garden or checking out what's under a rock or log ...are the legs out to the side or under the body? It is fast or slow? Has it curled into a coil or did it quickly run away? Such quick observations will help you determine which of "the pedes" you've found. Happy hunting! 🐛



BUG BIT

Built for speed -- With the shortest legs starting at the head, each additional pair of a centipede's legs is slightly longer than the pair in front. This helps ensure they don't overlap, reducing the chance they'll collide or tangle when moving fast.



CRAWL ON OVER TO OUR WEBSITE TO LEARN ABOUT MORE BUG FUN, LIKE FIELD TRIPS AND BIRTHDAY PARTIES!

KEEP ON TOP OF THE LATEST EVENTS AND ANNOUNCEMENTS:

Send an email to info@missoulabutterflyhouse.org asking to be added to our weekly email list and follow us on Facebook.



BECOME A MEMBER

Membership includes free admission (for the number shown for each level) for one year, discounts on special presentations and birthday parties, and invitations to exhibit openings and special events. Sustainer's membership includes a bonus personal, behind-the-scenes tour for up to 6.

INDIVIDUAL (1): \$35

PAIRS (2): \$55

FAMILY (3-5): \$65-\$100

SUSTAINER (6): \$250

WHAT'S NEW

WE OFFER PROGRAMS FOR
A VARIETY OF AGE RANGES!

EDUCATION PROGRAM UPDATES

A lot has happened at the Insectarium since our last newsletter. In case you have not visited in a while, there's a taste of what you've been missing and what's on tap:

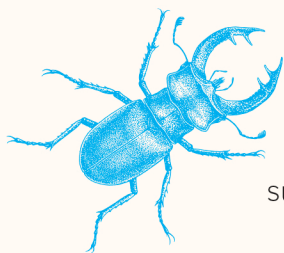
As die-hard Insectarium fans already know, each month we freshen things up by adopting a new theme for the month (which drives our weekly activities and special programs) and introducing visitors to a new species through our Bug of the Month exhibit. However, we recently added a new exhibit and are gearing up to rotate one of our main exhibits.

OBSERVATION BEEHIVE

In July we added an observation beehive to our permanent exhibits. Unfortunately our first colony did not take to life in the spotlight so we'll be re-launching this exhibit later this spring with a new colony of European honeybees.

EXTREME ANIMAL WEAPONS EXHIBIT

Since opening our doors, one of our main exhibits has focused on camouflage and mimicry. Later this spring we'll be rotating this exhibit to feature Dr. Douglas Emlen's (University of Montana) research on the development of extreme animal weapons. In addition to highlighting how and why certain animals developed such unusual body parts, this exhibit will showcase live insects that sport some impressive weaponry.



BUG BIOMIMICRY

To help 1st grade teachers meet the new Next Generation Science Standards on biomimicry, last year we launched a new biomimicry field trip. In this popular program students learn about biomimicry through inventions inspired by arthropods and have the chance to employ the Engineering Design Process to build a lifeboat inspired by water striders.

BUGS & BREWS

Since launching this lecture series in October 2015, its popularity has continued to grow. We recently began offering advance ticket sales and have now been selling out the event prior to opening the doors. A big "Thank You" to Draught Works for being our generous beer sponsor, to Western Cider and The Dram Shop for their support, and to all the incredible speakers who have shared their enthusiasm and knowledge.



Scan me

We're also adding QR codes that you can scan with your smart phone to tell more of the amazing stories behind our exhibits and about our animals.

MISSOULA BUTTERFLY HOUSE & INSECTARIUM STAFF

Hanna Cassidy
Work Study Student

Erin Gleason
Head Animal Keeper

Glenn Marangelo
Development Director

Carolyn Taber
Museum Educator

Taylor Chenette
Work Study Student

Madeleine Hull
Museum Interpreter

Jen Marangelo
Executive Director

Karen Weaver
Admissions Associate

**COME LEARN ABOUT THE LITTLE
THINGS THAT RUN THE WORLD!**

SUMMER CAMPS!

This summer we're hosting four weeklong day camps at the Insectarium. Each day features bug holding opportunities, time outside observing bugs in their natural habitat, and fun games, projects and activities.



Pollinator Power

JUNE 18 - 22

In honor of National Pollinator Week we'll be spending our days learning all about how pollinators work, the importance of pollination and how to conserve and support our pollinating friends.

Ecology Experiments

JULY 9 - 13

We'll tackle a host of ecological questions as we play, explore and create to learn.

Creative Creatures

JULY 23 - 27

Sitting right at the intersection of art and science, this camp takes on a variety of creative projects -- perfect for all young bug lovers; especially those with artistic inclinations!

Lil' Things, Big Jobs

AUGUST 13 - 17

This camp explores why insects are "The Little Things That Run the World."



For more detailed camp descriptions or to reserve a spot for your camper, go to www.missoulabutterflyhouse.org/camps/ or contact Carolyn Taber at 406-317-1211 or carolyn@missoulabutterflyhouse.org.

Missoula Butterfly House and Insectarium Board of Directors

Marcy Allen, *President*
Independent Consultant

Jennifer Boyer, *Treasurer*
Certified Registered
Nurse Anesthetist

Larry Brehm
Architect, L.K.Brehm, A.I.A.

Lisa Verlanic Fowler, *Secretary*
Teacher, Florence Carlton School

Glenn Marangelo
Development Director, Missoula
Butterfly House and Insectarium
Place Based Non-profit Consulting,
LLC

Jen Marangelo
Executive Director, Missoula
Butterfly House and Insectarium

Megan Robson, Vice-President
Realtor, Berkshire Hathaway
HomeService Montana Properties